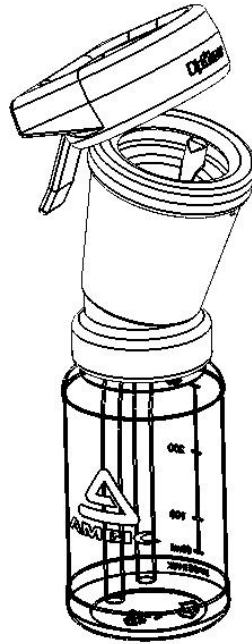


NOTE: NOT SUITABLE for FOAMING Dip Cups

USING DIPMIZER™ CASSETTE

Fitting DipMizer™ on to top of dip cup



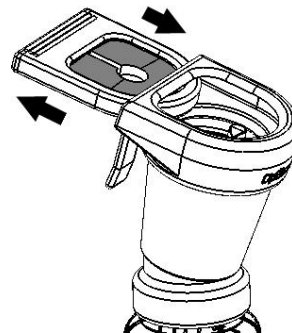
CLEAN ASSEMBLY AFTER EVERY MILKING

- Remove DipMizer™ from dip cup.
- Clean by immersing in hot water with detergent/steriliser.
- Massage bristles of brush well under water.
- Remove any dirt or congealed teat dip chemical from brush.
- Allow Brush to dry.
- Re-assemble onto dip cup.

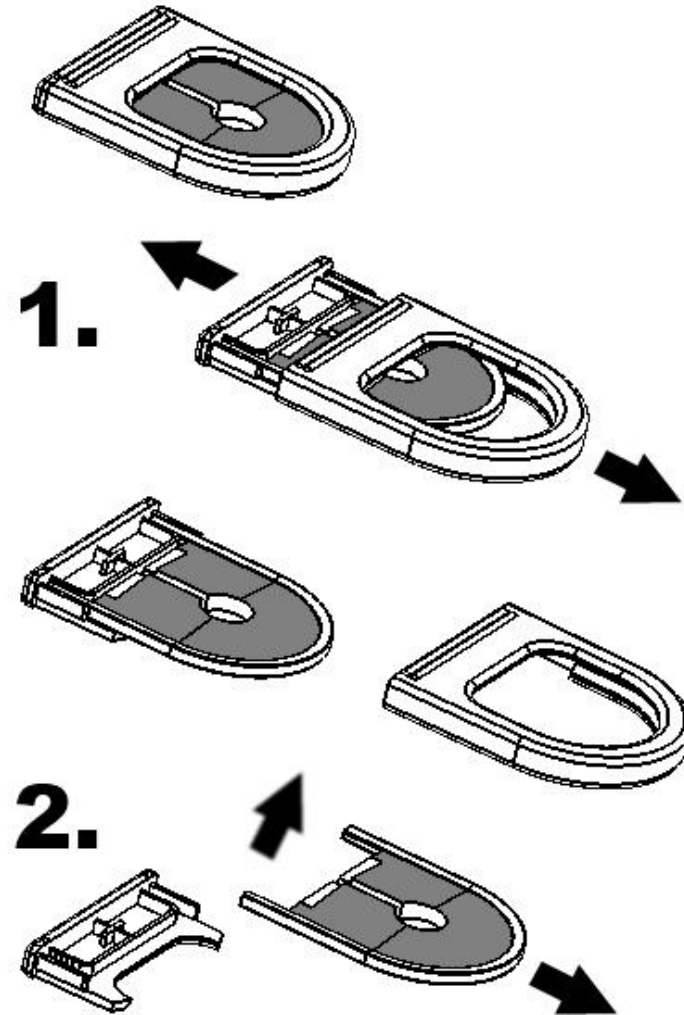
DISMANTLE ASSEMBLY ONCE WEEKLY

- Remove DipMizer™ from dip cup.
- Remove Cassette complete from Rubber Holder.
- When necessary, FOR MORE THOROUGH CLEANING, REMOVE BRUSH from Cassette (see overleaf).
- Clean ALL parts by immersing in hot water with detergent/steriliser (as for DAILY CLEANING).
- Allow Brush to dry.
- Re-assemble brush into Cassette and Cassette into Rubber holder.
- Re-assemble onto dip cup.

Fitting /Removing Cassette



DISMANTLING CASSETTE ASSEMBLY – AS NECESSARY



WARNING:
FAILURE to follow the recommended CLEANING PROCEDURE may result in BACTERIAL CONTAMINATION of Teat Dip Chemical.