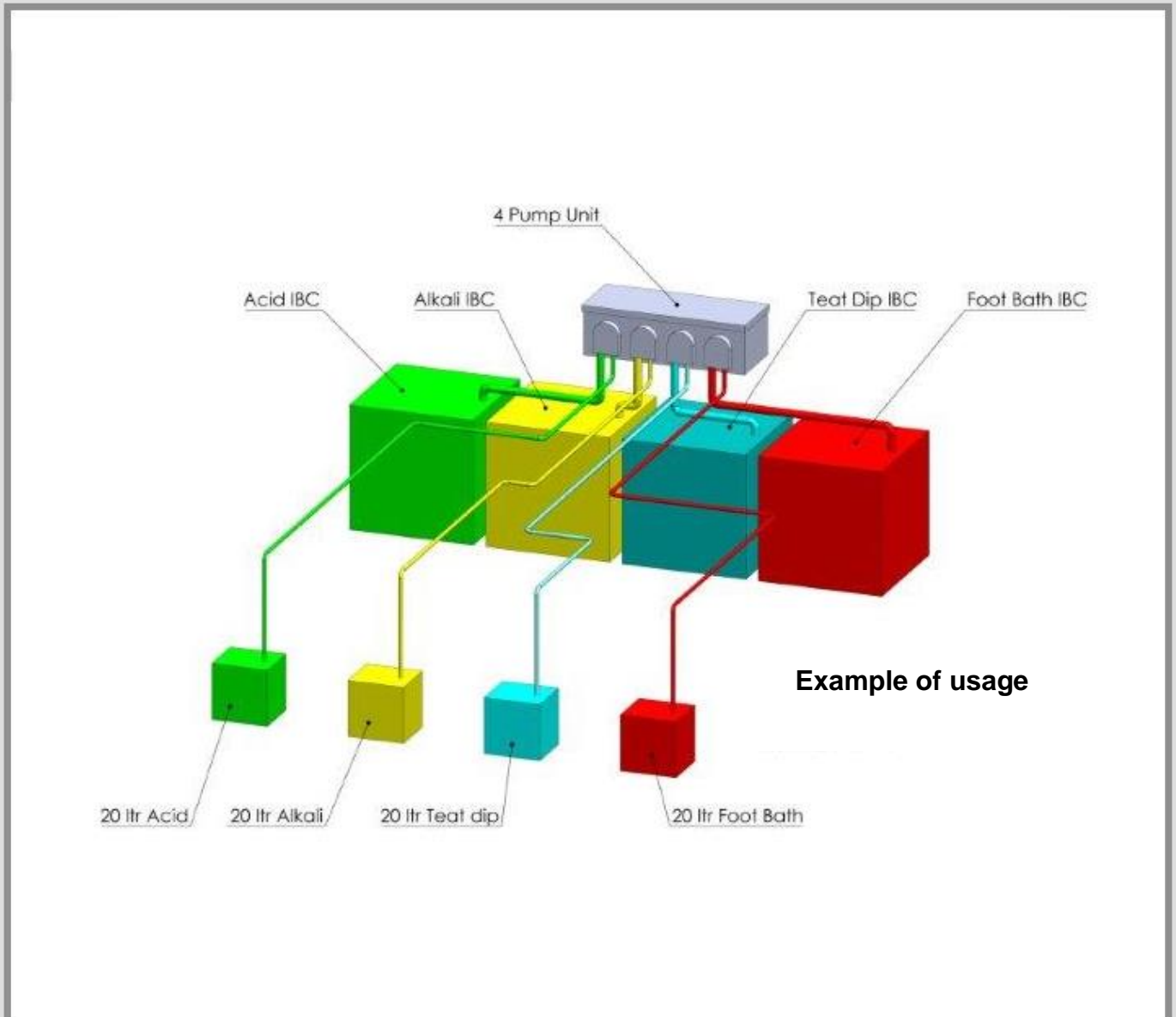


# AMBIC®

## Remote Delivery System™



## OPERATING INSTRUCTIONS

*leading best practice in livestock health management*

## Introduction

In order to maintain Health & Safety during the transportation and decanting of chemicals from 1000 / 200lt tanks to more manageable small containers, followed by transportation nearer to the milking machines, it has become increasingly important to have a **Remote Delivery System™** that will refill your header tanks over a distance of up to 40 metres.

The **Remote Delivery System™** has a seven-segment display for accurate control over the fill time for the header tank. The time can be set for up to 99 minutes.

Depending how the unit is programmed, **Remote Delivery System™** will activate when one of the tank's chemicals has gone below the minimum level set for the header tank. When this happens, the beacon will start flashing indicating that at least one of the chemicals has gone below the set level and requires replenishing.

Note: the system can be supplied with or without a manual activation button.

When the beacon flashes, one of the four LEDs in the Switch box will have lit up. To replenish this chemical the button with the LED ON must be pressed (if using a manual system). The pump will start and run for predetermined time to refill the appropriate tank. If more than one LED is on, then up to three buttons can be pressed in order to refill three tanks at the same time.

If the units are programmed to be used without the manual activation button, then the pumps will automatically start when the header tank's chemical has dropped below the level set. The pump will run for a pre-determined length of time which has been pre-set on the seven-segment display.

Should the pump fail to stop for any reason – a safety cut off will come into operation when the chemical reaches the highest level set by the top float switch on the header tank. The affected pump will stop running.

## Power

This unit must be connected to an isolator with at least 3mm separation at all poles.  
This unit must be earthed.

## Safety



**CAUTION:** *To avoid severe or fatal shock, always disconnect main power when servicing the unit. Access to LIVE PARTS is possible whilst the lid is removed.*



**CAUTION:** *Wear protective clothing and eyewear when dispensing chemicals or any other materials. Observe the chemical manufacturer's safety handling instructions (SDS).*

## Installation

### Mounting

The enclosure is designed to be fitted to a suitable vertical flat surface such as a wall. However, it is unsuitable for mounting on hot surfaces. Mounting brackets are provided at the back of the stainless steel enclosure. It is important to mount the unit as close as possible to the chemical drums.

The stainless steel enclosure lid is removable for installation.

## Ambic Equipment Ltd – Remote Delivery System™ Operating Notes

### Pump

The pump will turn clockwise during operation. Liquid intake is on the left-hand spigot and delivery is on the right-hand spigot. Ensure the correct intake and delivery tubes are used for the spigots fitted. Secure the intake and delivery tube with Jubilee clips.

### Dual Float Switch

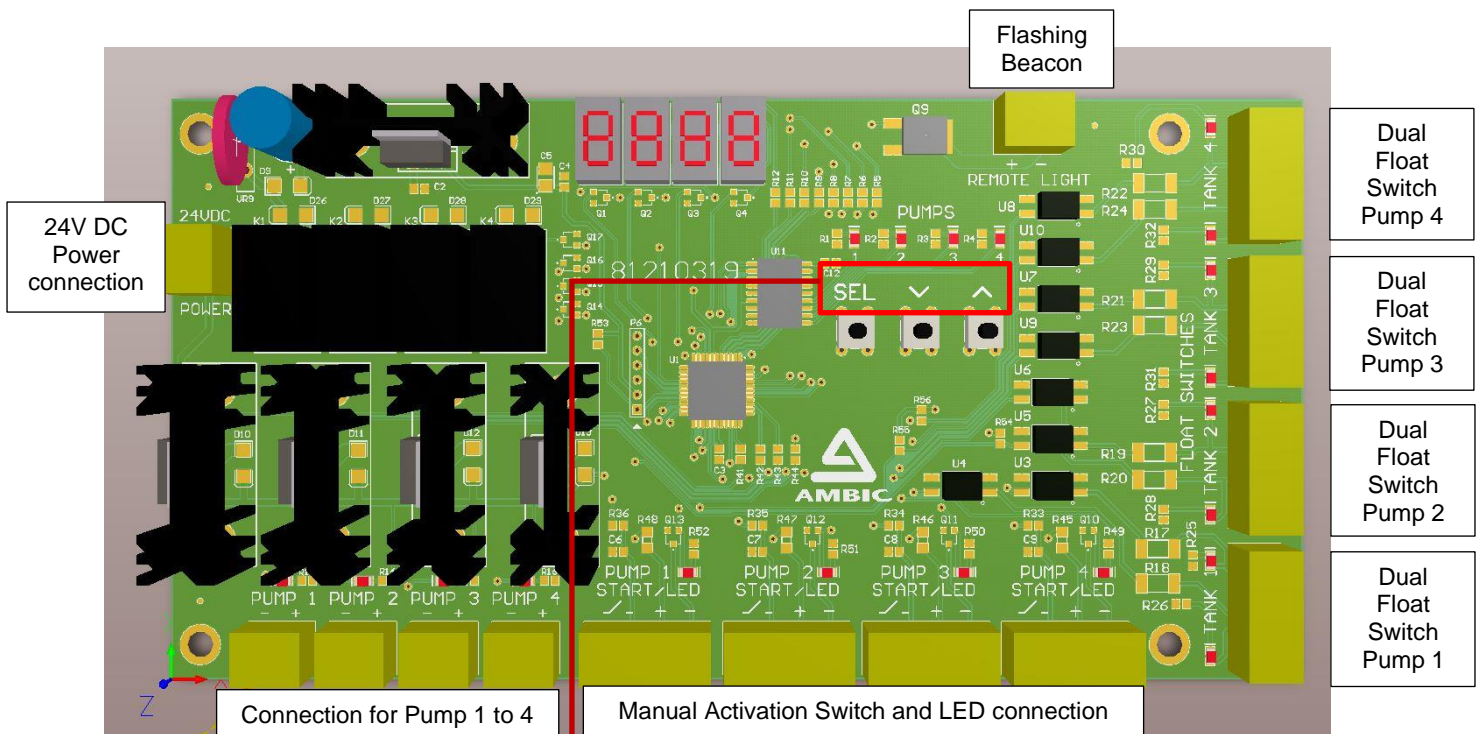
Fit the Dual float switch in the 20/25L header tank by drilling an appropriately sized hole in the cap or appropriate place. Extend the wire using a suitable junction box and four-core cable; terminate the ends with bootlace ferrules. Feed the cable through the cable gland in the stainless steel enclosure and connect “Dual Float Switch” connection. Float Switch 1 controls pump 1 and Float Switch 2 controls pump 2, etc.



Float switch connection:

Blue and Green wire = Low float switch

Red and Yellow wire = High float switch – (Emergency stop button)



### Setting the pump run time

Press the Select **SEL** button until the PUMP 1 LED lights up; press the  $\wedge$  or  $\vee$  arrow to set the run time for Pump 1. Press the SEL button again and the PUMP 2 LED lights up. Again, use the  $\wedge$  or  $\vee$  arrows to set the run time for pump 2. The SEL button can then be used again to access pumps 2 and 3.

## Ambic Equipment Ltd – Remote Delivery System™ Operating Notes

### The initial run

When the pump is started for the first time, both float switches will be exposed, and therefore, the pump will run for 2.5 x the set time. This fills the header tank with chemical up to the halfway point.

### Flashing Beacon

The beacon will flash when one or both pumps are running.

### Specifications

<b>Pump delivery</b>	Approx. 360 litres per hour (delivering water and using Santoprene peristaltic tube).
<b>Fuse rating</b>	4.0A Time delay

### Pump Maintenance

The pump is self-priming and will give long, trouble free, efficient operation. It is recommended that the peristaltic tube is lubricated with silicone grease, through the hole in the front of the pump and is replaced regularly.






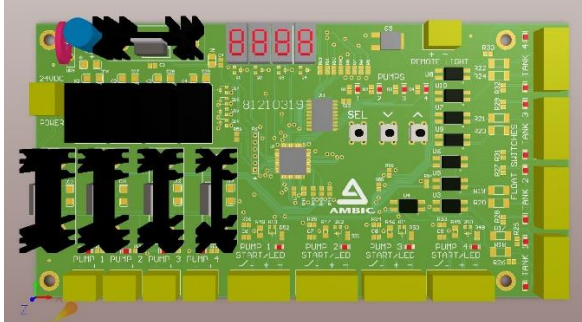
The information in this leaflet is for general information and guidance only. Ambic Equipment Ltd does not provide any warranty on the application of Pumps or Pump Assemblies. It is recommended that customers carry out life tests for their particular application to determine suitability prior to use. The information provided is given in good faith and believed to be current and correct at the time of publication. Ambic Equipment Ltd cannot accept responsibility for any errors or omissions contained in this document.

## Troubleshooting

Fault	Cause	Remedy
Pump does not work	<p>Pump is not connected to the supply.</p> <p>The supply is switched OFF.</p> <p>Pump is drawing current but not running.</p>	<p>Check that pump is connected to supply voltage.</p> <p>Switch the supply ON.</p> <p>Check the power supply can supply the required current.</p>
No pump output delivery	<p>Pump is not running.</p> <p>Spinner assembly is not running clockwise.</p> <p>Inlet tube is not connected to the left hand spigot.</p> <p>Suction tube assembly is not properly inserted into chemical drum.</p> <p>Stiffener not fitted to the suction tube.</p> <p>Kinks in the suction and/or delivery tube.</p>	<p>Connect the power to the pump.</p> <p>Reverse the supply connections.</p> <p>Connect the inlet (suction) tube to the left hand spigot.</p> <p>Insert the suction tube into the drum.</p> <p>Fit a stiffener tube; this will help with keeping the suction tube to the bottom of the drum.</p> <p>Remove the kink and make sure it does not happen in the same place again.</p>
Pump does not lift the liquid	Peristaltic tube needs replacing.	Replace with tubing of the correct material, size bore, and shore hardness; use appropriate spigots.
Chemical seems to be lift and then dropping back.	<p>Peristaltic tube needs replacing.</p> <p>Air getting inside the tube.</p>	<p>Replace with tubing of the correct material, size bore, and shore hardness; use appropriate spigots.</p> <p>Check if the suction tube is fitted tight on the spigot and if necessary, fit a jubilee clip.</p>

**Parts Listing**

The following spare parts are available to order separately:

<p>AHP/100-SA1275 Peristaltic Tube</p> 	<p>AHP/102 Roller Assembly</p> 
<p>AHP/103 Pump Block and Cover</p> 	<p>ALP/115 Silicone Grease</p> 
<p>EHV/M-100-24 Chemical Pump Motor Kit</p>	<p>ARD/005 PCB</p>
	



Ambic Equipment Limited,  
 1 Parkside, Avenue Two, Station Lane,  
 Witney, Oxfordshire, OX28 4YF. England  
 Tel: +44 (0)1993 776555 Fax: +44 (0)1993 779039  
[www.ambic.co.uk](http://www.ambic.co.uk)